

The User Experience Platform for the Industrial Internet

Webalo 4.0 Release Notes



Webalo®

Webalo 4.0 Release Notes

About Webalo	3
Webalo Core Features	3
Release Overview	5
End of Life Announcements	5
Features	6
Major Enhancements	6
Desktop client with personalized multi-pane UA	6
Data Mash-up with Mash-Up Builder	7
Limitations	9
Dynamic, interactive KPI and chart dashboards that support runtime inputs.	10
4.0 Charts	11
Actionable notifications	11
Other Enhancements	11
Highlighted table cells	11
Features delivered prior to 4.0	12
REST connector input and output customizations	12
DB multi result set configuration support	12
Map view	12
Dependent drop downs	12
Fixes	12

About Webalo

Webalo is the User Experience Platform for the Enterprise - a no-code app generation platform focused on simplifying how applications are designed, developed and consumed.

Webalo automatically generates apps that provide personalized, dynamic persona-based, user experiences, that adapt to user requirements in real-time, directly from Predix service endpoints and other GE Digital industrial products, including Asset Performance Management (APM) and Brilliant Manufacturing Suite (BMS), as well as enterprise applications from vendors such as Microsoft, Oracle, SAP, Salesforce.com, ServiceNow, and even in-house custom applications.

Our apps are user focused, automatically generating mash-ups from multiple data sources to provide users with simple, personalized ways to visualize and respond to information through actionable notifications, real-time dashboards and bi-directional workflows, that help them make better, more informed decisions and improve their productivity.

Webalo is partnered with GE to enable digital transformation of industrial businesses in industries such as automotive, aviation, chemical, food & beverage, oil & gas, life sciences, power & utilities and other industrial manufacturing markets.

Webalo Core Features

No-code: Webalo apps are generated automatically through a simple step-by-step configuration process. We're targeting citizen developers, user departments, rapid app development projects that need to reduce time and expense and the dependency on specialist skills. With our patented technology - The User Proxy Server - Webalo generates user interface frames for multi-channel deployment.

Dynamic persona-based apps: Webalo apps meet the needs of individual users, who only see what they need to see to help them get their jobs done. See section [Desktop client with personalized multi-pane UA](#).

Enterprise grade: Webalo is available, scalable and secure with cloud and behind the firewall deployment options.

Multiple data source connectors: Webalo connects to enterprise data, such as IBM, Oracle, Microsoft & SAP; GE data, including Predix, APM, BMS and ServiceMax; and other industrial data from vendors such as Rockwell, Siemens & Wonderware. Webalo has the ability to connect to any data source by using JDBC drivers and Web services (REST and SOAP).

User focused data-mashups: Webalo enables real-time, user-focused, on screen mash-ups of these data sources. See section [Data Mash-up with Mash-Up Builder](#).

KPIs, Dashboards & Charts: Webalo offers a broad choice of visualization options, automatically generating KPIs, dashboards & charts, dynamically, from the data sources. See section [Dynamic, interactive KPI and chart dashboards w/ user inputs](#).

Alerts & notifications: Webalo apps monitor the users' real-time environment and alert them to events and changes that they need to respond to. See section [Actionable notifications](#).

Actionable & bi-directional: Webalo apps enable users to drill down into the data, launch workflows and business processes and allow users to enter, capture, store/forward, write and view data.

Multi-channel: Webalo apps run natively on Android & Apple smartphones and tablets as well as on Chrome, Firefox, Edge & Safari browsers on desktops and large screen displays.

Release Overview

Webalo 4.0 is introducing the new UX platform for Industrial Internet with interactive multi-pane desktop UA, updated modern look & feel, dynamic persona-based apps and user focused data mash-ups.

With new 4.0 charts, Webalo users will have more control over and be able to interact with the data.

End of Life Announcements

NA

Features

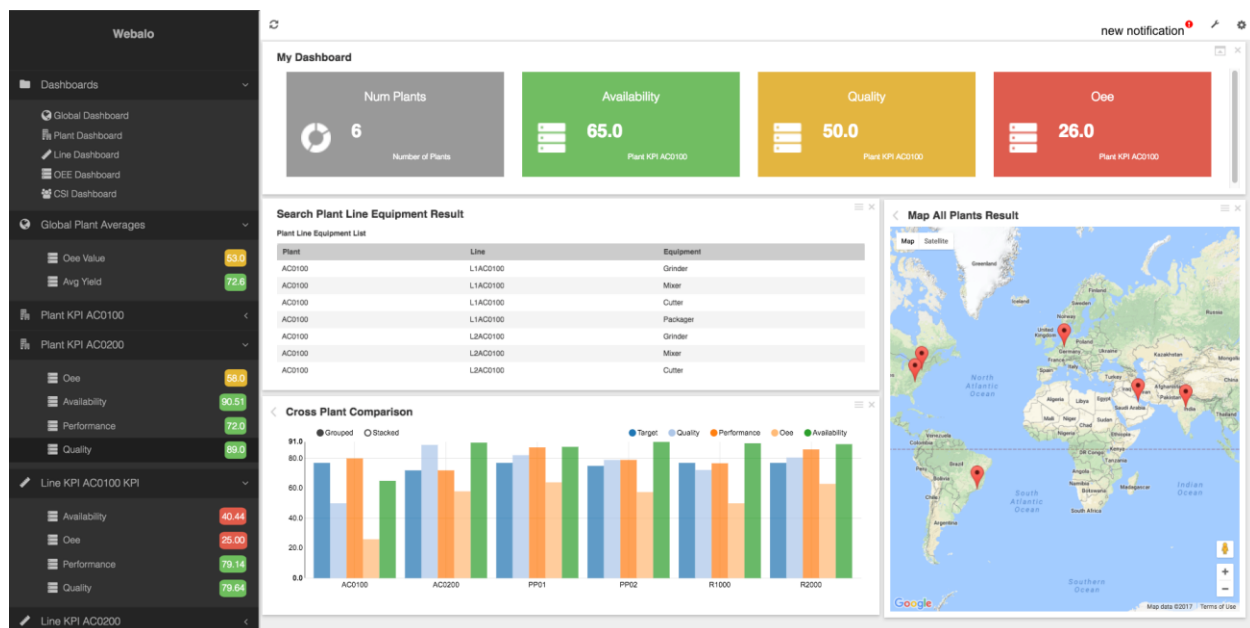
Major Enhancements

Desktop client with personalized multi-pane UA

New desktop client gives the users the ability to drag and drop the items from the left navigation menu to their workspace. Users can open multiple frames in the workspace including KPI and chart dashboards and apps.

All the panes on the workspace can be moved, resized, and closed. Also, dashboards can be maximized to show in full screen mode.

To turn on the multi-pane web UA load the current web UA and then press the context menu button and choose Settings. Put a checkmark in the Use Multi-Panel Workspace and then press Back. You will then need to refresh your browser to access the new UA.



Data Mash-up with Mash-Up Builder

Webalo 4.0 is a powerful, new desktop client that supports a first of its kind data “mash-up” capability enabling workers to view and interact with multiple data streams within a single environment. For example, a plant manager could view incoming orders against component inventory and worker schedules to quickly determine which jobs to put into production and then immediately initiate the manufacturing process. It’s a powerful advance that allows full workspace customization and provides users with the ability to accomplish all of their tasks from within the Webalo platform.

Webalo provides data compositions from multiple data sources in various ways. Before Webalo 4.0, data compositions were done by related tasks; task output screens show one set of data from a single source at a time, and each result can drill down to selected data details from different data sources.

Now that Webalo 4.0 offers multi-pane UA, users can open multiple result sets on the workspace.

Webalo 4.0 goes beyond showing the separate frames in one workspace, it has the capability to compose data from disparate data sources and present them on the same screen. Composition configuration is done on administrative website (AW) by identifying the related data in between result sets.

Webalo®
The app for enterprise™

Welcome Pelin Ersavas (snow)

Agenda

Start a new activity

Add mashup

Name mashup operation

Configure a join mashup

Review and deploy changes

CONFIGURE A JOIN MASHUP

Select two tasks to be joined and select a join field. Select a field on which the rows from the two tasks shall be matched together. [\(Click here for help.\)](#)

First Task: SNOW Approvals

Change

Name	Data Format
Result	Result Generated Type
Result Item	Result Item Generated Type
Due date	Text (xsd:string)
Expected start	Text (xsd:string)
State	Text (xsd:string)
Sys created by	Text (xsd:string)
Sys created on	Text (xsd:string)
Sys id	Text (xsd:string)
Sysapproval	Text (xsd:string)

Second Task: SNOW Approvals Details 2

Change

Name	Data Format
Result	Result Generated Type
Result Item	Result Item Generated Type
Active	Text (xsd:string)
Category	Text (xsd:string)
Conflict status	Text (xsd:string)
Description	Text (xsd:string)
Impact	Text (xsd:string)
Number	Text (xsd:string)
Phase	Text (xsd:string)
Priority	Text (xsd:string)
Risk	Text (xsd:string)
Short description	Text (xsd:string)
Sys created on	Text (xsd:string)
Sys id	Text (xsd:string)
Sys updated on	Text (xsd:string)
Type	Text (xsd:string)
Urgency	Text (xsd:string)

Exit

PreviousNext

FinishCancel

Copyright © 2007-2017 Webalo, Inc. All rights reserved.

Data from multiple sources, on the end-user interface, is represented either on separate views or on a composite view. End-users can mashup multiple data views into one by drag and dropping one view onto another.

To access the Mashup Builder, log into your Administrative Website, click on Connect to your Applications and Data > Mashups.

SNOW Approvals Result						
Due date	Expected start	State	Sys created by	Sys created on	Sys id	Sysapproval
2017-04-26 20:21:30	2017-04-26 20:21:30	requested	admin	2017-04-26 20:21:30	1653cd764fde32006bcd2d118110c741	46cb2f54a9fe198101cf6814a275460
2017-04-27 20:32:26	2017-04-27 20:32:26	requested	admin	2017-04-27 20:32:26	1c7f8a0f4f9232006bcd2d118110c752	c422fb540a0a0b1200b05d16361b2b
		requested	admin	2017-04-30 16:08:55	3abfa8c44f6632006bcd2d118110c76f	
2017-05-02 08:33:47	2017-05-02 04:33:47	requested	admin	2017-05-02 04:33:47	5af3e86c4f6e32006bcd2d118110c757	c423092d0a0a0b12002e91b14392dc
2017-04-27 20:32:18	2017-04-27 20:32:18	requested	admin	2017-04-27 20:32:18	866f064f4f9232006bcd2d118110c791	c42441770a0a0b12001a2f5108d079
		requested	admin	2014-03-24 22:17:09	a9edba41c6112276003dd567c79c8132	a9e9c33dc61122760072455df62663d
		requested	glide.maint	2016-11-02 06:31:50	d77f1bb9c0a8016700fb35cc1bcf5c5d	d7323e9dc0a8016700538974c2efb7

Update

Drag the title bar and drop it on the highlighted frame

SNOW Approvals Details 2 Result			
Active	Category	Conflict status	Description
✓	Software		Performance of the Siebel SFA software has been severely degraded since the upgrade performed this weekend. We m
	Telecom		Sales has their own private dialing prefix now so they'll always have an open outside line even if the PBX is full.
	Software		Please roll-back SP2 patch for all XP Users.
✓	Software		
✓	Telecom		
✓	Hardware		We're going to put another 100 GB drive on the floor 2 server. Needs a 100 GB SCSI II Ultra Drive.
✓	Other		The new VP of R&D is thinking of switching the engineers over to Linux desktops and wants to know what it'd take on ou
✓	Hardware	Not Run	Please install new Cat. 6500 in Data center 01
✓	Software		Need to apply the follow security patches from oracle - 10.2.0.1 to 10.2.0.3.
✓	Other	Conflict	
✓	Other	Conflict	
✓	Other	No Conflict	
✓	Other	No Conflict	

Snow Approvals Mashup Result										
Output Table										
	Expected start	State	Sys created by	Sys created on	Sys id	Sysapproval	Active	Category	Conflict status	Description
30	2017-04-26 20:21:30	requested	admin	2017-04-26 20:21:30	1653cd764fde32006bcd2d118110c741	46cb2f54a9fe198101cf6814a2754606	✓	Hardware	Not Run	Please install ne
		requested	admin	2014-03-24 22:17:09	a9edba41c6112276003dd567c79c8132	a9e9c33dc61122760072455df62663d2	✓	Software		Performance of t
		requested	glide.maint	2016-11-02 06:31:50	d77f1bb9c0a8016700fb35cc1bcf5c5d	d7323e9dc0a8016700538974c2efb7f1	✓	Software		Need to apply th

Limitations

In addition to only being available in the Multi-Pane UA, the following limitations are also in place:

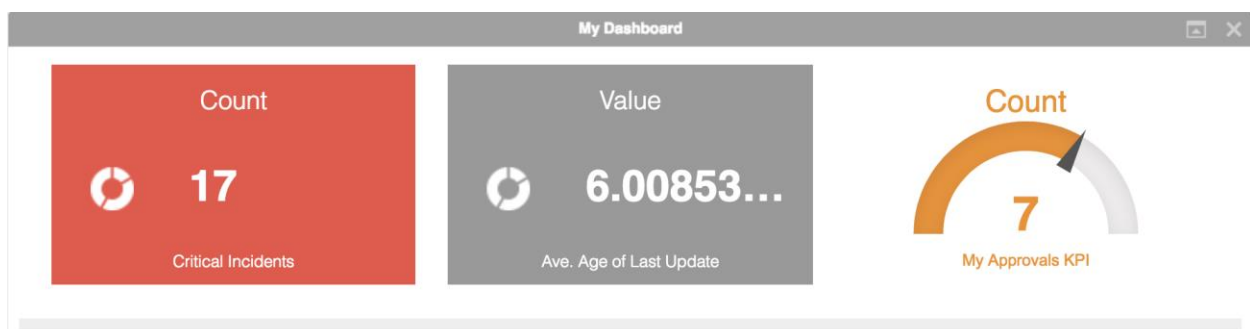
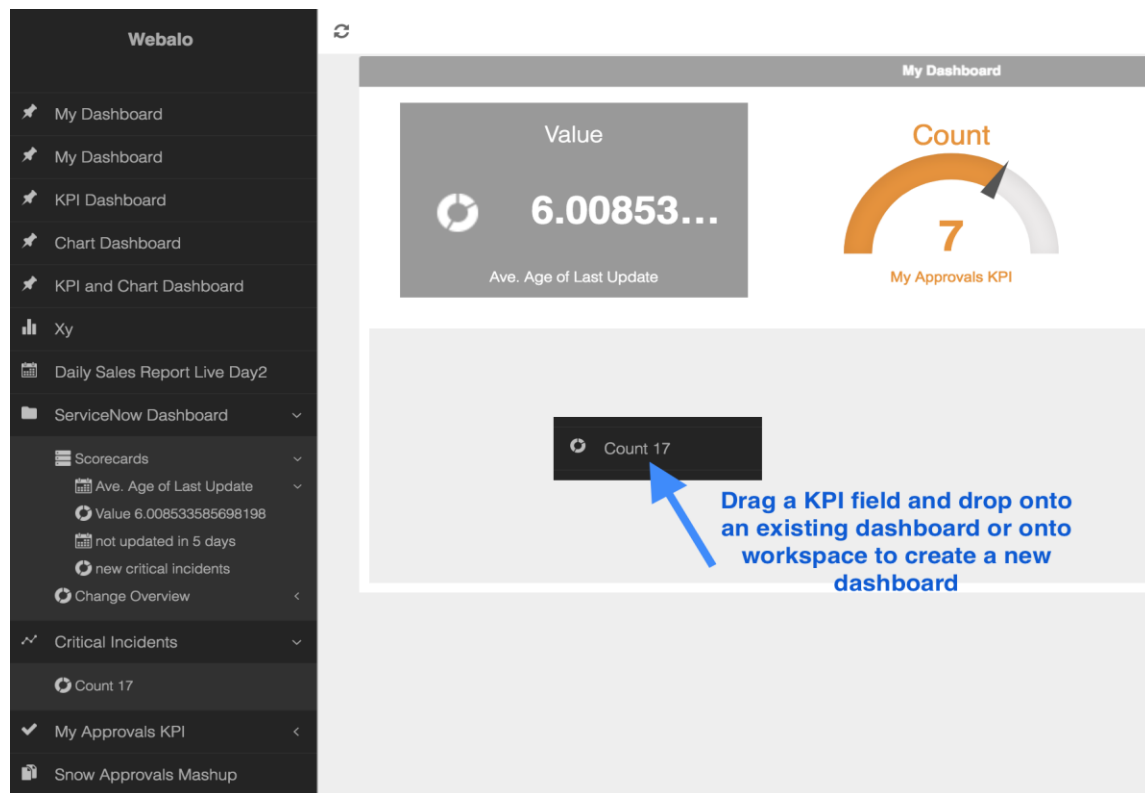
- Constituent tasks cannot have any input needed during invocation.
- Only a 2 task (constituent tasks) join is allowed and performed on a single field.
- Constituent tasks must have a tabular output which can be deeper than 1st level in their corresponding output schemas.

Dynamic, interactive KPI and chart dashboards that support runtime inputs.

Webalo has recently launched the feature to have pre-configured charts show up on dashboards. Any chart that is built in your account and then published can be included in a dashboard along with KPIs.

Webalo 4.0 offers a new feature with our dashboards:

- **Drag and drop KPIs:** domain administrators can select KPIs from the left navigation menu on the desktop client to add to an existing dashboard or onto workspace to create a new dashboard.



- **KPI drill downs:** Users can drill down to related data or tasks by clicking any KPI tile on the dashboard.

4.0 Charts

Webalo charts are now using a new, updated charting library.

Interactive charts: Users can filter the data or choose to hide data by clicking them in the legend.

Real-time charts: Charts can refresh periodically.

Chart configuration: Webalo has drastically improved the chart building screen for all chart types. These improvements have made chart building even easier.

Actionable notifications

Desktop and iOS push notifications: You can now set a KPI to send a notification if a certain threshold is crossed. Desktop notifications can then launch subsequent apps that allow for the end user to take action on the notification.

Other Enhancements

Highlighted table cells

Webalo has added a new feature for rule based coloring of table cell content. This feature allows Webalo admins to select a numeric table column in the AW and to specify a color and a condition for the field. On the Webalo client, depending on the condition the user sees the specified color.

Product Inventory Result			
Products			
Name		Available	List Price
Sport-100 Helmet, Red		887904	\$34.99
Sport-100 Helmet, Black		974268	\$34.99
Mountain Bike Socks, M		33840	\$9.50
Mountain Bike Socks, L		9504	\$9.50
Sport-100 Helmet, Blue		667440	\$34.99
AWC Logo Cap		974016	\$8.99
Long-Sleeve Logo Jersey, S		61776	\$49.99
Long-Sleeve Logo Jersey, M		219240	\$49.99
Long-Sleeve Logo Jersey, L		353160	\$49.99

Features delivered prior to 4.0

REST connector input and output customizations

If you have a RESTful web service application that takes an input parameter (as delimited by the \$\$ in the relative URL and the request body) you can now edit the inputs.

Each input can then be rearranged in order on the input screen or assigned a Built-in Data format (date, time, integer etc.) or a Custom data format (drop downs, and linking purposes) which will help create a more robust application.

You can exercise the same query with different inputs to cover all possible result sets. You can also configure the result set by reformatting, relabeling, hiding, or re-ordering. You can assign KPIs and actionable notifications very easily.

DB multi result set configuration support

If you have a query or stored procedure that returns multiple result sets, you have the option to select which result set you would like to display in the Webalo client interface for that task.

You can use “Duplicate DB task” feature below to be able to quickly duplicate the task to configure the other dataset.

Map view

We now offer the ability to produce a map view of any table with latitude and longitudinal coordinates.

Dependent drop downs

Now, in your DB apps you can have dynamic drop downs (pulled directly from a field in a DB) that are also dependent on one another.

Fixes

Native client connection performance fixes

Offline task invocation bug fix on iOS